



A great career
in health

goes with
the Territory

A great career in health goes with the Territory

A complete Guide to Living and Working in Australia's Northern Territory for health professionals

NT HEALTH

Visit healthjobs.nt.gov.au
Email healthjobs@nt.gov.au
Phone +61 8 8922 7020





A great career
in health

goes with
the Territory



Acknowledgement of Country

We respectfully acknowledge and honour the Aboriginal people of the Northern Territory and recognise the continuation of culture, connection to lands, water and country. We pay our respects to Elders past, present and future.

Contents

Working in Health in the Territory	4
Our Vision and Values	6
Our Locations	7
NT Health Service Locations	8
Opportunities in Healthcare	9
Medical	10
Nursing and Midwifery	13
Allied Health	15
Oral Health	19
Aboriginal Health Practitioners	20
Primary Care Sector (NT PHN)	22
Living and working in remote areas	24
The Territory	26
Living in the Top End	28
Living in East Arnhem	34
Living in Big Rivers	38
Living in Barkly	42
Living in Central Australia	46
Making the move	50
Contacts	51

Working in Health in the Territory

NT Health employs a diverse, highly capable and engaged workforce that is committed to improving the health and wellbeing of all Territorians.

The Northern Territory offers career opportunities, adventure, diversity of work, flexible work practices, a sense of purpose, diverse client groups, and professional development, all of these benefits... Goes with the Territory!

Explore the variety of career opportunities and unique lifestyle at healthjobs.nt.gov.au.

Northern Territory's health services

NT Health manages the Northern Territory public health system, operating across 5 service delivery regions providing the full spectrum of essential, quality health services, from health promotion to prevention, treatment, rehabilitation, and palliative care across the life course.

Each region aligns NT Health with the NT Government regional boundaries and provides greater opportunity for collaboration; ensuring consistency with regional reporting; and strengthening local accountability and responsive care.

Public health services are provided through 6 public hospitals, including 2 in Greater Darwin, one in each Alice Springs, Tennant Creek, Katherine and Gove.

The [Northern Territory Primary Health Network](#) supports health service delivery in the Territory, as one of 31 Primary Health Networks around the country. They do this by identifying gaps in the health system and commissioning local providers to deliver services to fill those gaps.

Working together to provide direct care to the community through 39 primary health care centres and support 133 clinics/ services in 76 remote communities, operated by Aboriginal Community Controlled Health Organisations (ACCHO) throughout the Territory.





Our vision

Great health for all Territorians.

Safe, Responsive, Kind

Our people will demonstrate our values in their work through their decision-making and interactions with patients, the community, peers and other organisations.

Our values



Diversity

Ensure the person with a health care need is at the centre of culturally safe practice, free from racism and discrimination



Ethical practice

Demonstrate ethical practice, a commitment to social justice and equity, working with integrity and being accountable for our decisions and actions.



Respect

Be respectful and compassionate when working together and with others.

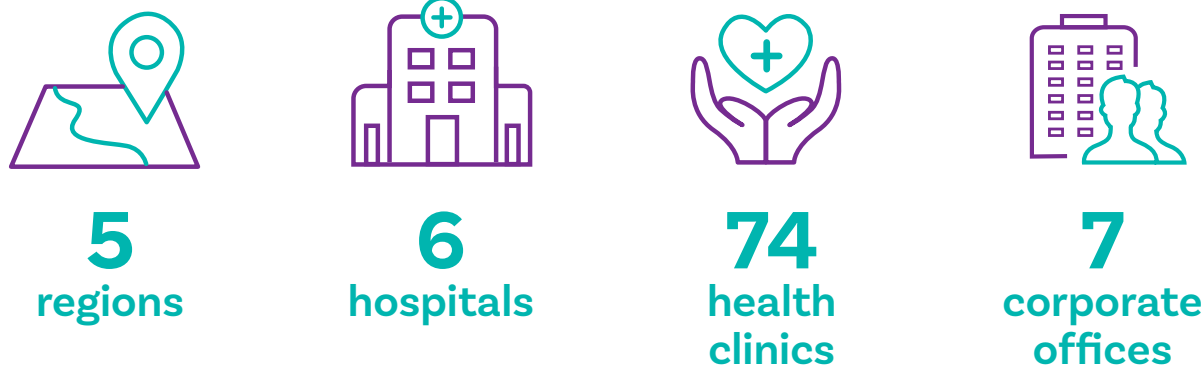


Courage

Be courageous and brave in our leadership.

Our locations

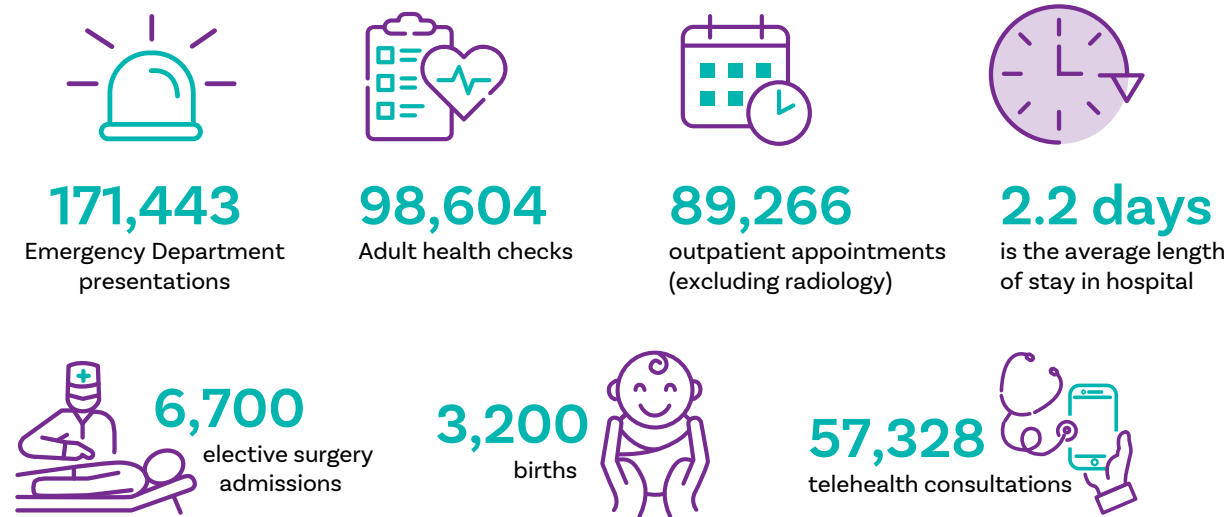
NT Health covers



*in urban, rural and remote communities and homelands across the Territory. Our dedicated primary and public health teams work to provide outreach services to community centres, remote healthcare clinics and schools.



Our vital signs



NT Health Service Locations



Opportunities in Healthcare

Working in health in the Northern Territory

Living in the Northern Territory



Community Allied Health Team, Katherine, Big Rivers region

Medical

Medical health professionals engage with the community and make a real difference, all while exploring the Territory and enjoying the dynamic and eclectic lifestyle on offer.

Have access to first-class professional development, training and ongoing support to ensure you feel supported and equipped with the knowledge you need to perform in your role while providing excellent healthcare to all Territorians.

Being a medical professional in the Territory isn't just about helping people - it's an opportunity to explore Australia's most iconic location. The Territory offers various positions over a wide range of landscapes. There are opportunities to live and work in city, urban, rural and remote areas. You could even combine these options to create the perfect work-life balance for you and your family.

Working in the Territory offers you:

- Diverse, complex and unique clinical experience with exposure to different medical conditions - such as rheumatic heart disease and tropical and infectious diseases like trachoma, syphilis and melioidosis
- The opportunity to learn about Aboriginal health and culture
- The option to travel to regional or remote communities to provide clinical services
- A chance to work within established multidisciplinary teams in an environment that encourages innovation and excellence
- Flexible training opportunities responsive to individual aspirations and need
- A focus on generalism in our training pathways to ensure broad clinical exposure
- Well-established prevocational training, including rural generalist pathways

Vocational training pathways and support to achieve your career goals.

Locations include Alice Springs, Darwin, Katherine, Palmerston, Tennant Creek, Nhulunbuy and various remote communities.

Job roles in medical

We have positions for first-year graduates, right through to Specialists.

- Hospital and Community Specialists
- Rural Medical Practitioners, Duty Medical Officers and Rural Generalists
- Fellows
- Registrars (accredited advanced and basic training, unaccredited)
- Resident Medical Officers
- Interns
- International Medical Graduates
- Anaesthetics
- Emergency medicine
- Intensive care positions
- Medicine positions
- Mental Health
- Obstetrics and gynaecology
- Paediatrics
- Primary health care
- Pathology
- Surgery positions

Incentives

With up to 7 weeks of recreation leave per year, you'll have the opportunity to experience everything our unique Territory has to offer - and still have time to visit family and friends interstate or overseas.

Other benefits may include:

- A generous relocation package depending on the commencement level and place of recruitment
- Professional Development allowance and up to 10 days of professional development leave per year
- Salary packaging
- Shift penalties
- Opportunities for remote or regional travel and exposure
- Options for flexible working arrangements
- Support for composite or dual appointments - for example, joint academic appointments with the University or Menzies School of Health Research
- Diversity in clinical experiences
- Support of strong multidisciplinary teams and clinical networks
- Career opportunities that make a real difference to the Northern Territory's communities.

Generous packages are provided and will be discussed as part of the recruitment process. This includes relocation and accommodation support and various incentives.

Explore flexibility with remote health

Working in a remote area of the Territory is not just once-in-a-lifetime cultural and clinical experience - it may also provide the accelerated career opportunities you have always wanted.

Rural Medical Practitioners and Duty Medical Officers have the best of both worlds being based in a large urban centre with weekly outreach visits to the smaller community health centres or providing 24/7 to remote clinics with medical advice, emergency management and arranging retrievals. Some opt to live in larger remote communities allowing them to become completely immersed in the remote community life.



📍 Gove District Hospital, Nhulunbuy

Testimonial

Alyson Knell

Rural Generalist, Katherine, Big Rivers region



“What I love most about working in Katherine, is that I have a very diverse job here. I'm a Rural Generalist and work across a lot of different areas; I do anaesthetics, work in theatre a couple of days a week and I work in ED doing emergency medicine. I also go up to the Pine Creek Clinic, which is just north of here doing primary health care and general practice.

One of the most impactful parts of my role is that we have a really diverse range of presentations here in medical practice. We see things in presentations that you wouldn't see in a big city, that are unique to the NT. We have a lot of patients that are Indigenous and it's really rewarding to work in Indigenous health.

What I love about living in Katherine is the proximity to outdoor activities and the relaxed Territory lifestyle. Here,

you can easily go camping on weekends, in all directions out of Katherine. There is lots to do around town; we've got hot springs and lots of cafes. I have young kids and it's a really good town for young kids to grow up in.

I live on a rural block just outside of the Katherine township. It's a really nice relaxed lifestyle, lots of birds and nature. My kids can run around and ride their bikes on the block on the weekend. They spend their weekend playing outside the whole time.

I originally moved to the Territory about 14 years ago seeking adventure... I was actually a tour guide for a while. I fell in love with the lifestyle. I decided to do Medical school but came back as quick as I could. I lived in Darwin and did my training for rural general practice around the Top End, and now I've been in Katherine for a couple of years and I'm hoping to stay.

I would say to someone who is a GP moving to the Territory - that being a GP in the Territory can be whatever you want it to be. You can work in community general practice only; you can branch out and work in emergency in a rural and remote location; you can do Indigenous health in a remote community or an Aboriginal service in town. So, it's yours to make what you want of it.”

Nursing and Midwifery

There's a fulfilling career in Nursing and Midwifery waiting for you in the Territory.

The skills and experience you will gain with NT Health are as diverse as the Territory itself and limited only by your ambition. We are committed to supporting our workforce to achieve their full potential and gain development in areas including but not limited to:

- Trauma
- Chronic Disease
- Mental Health
- Tropical Medicine
- Aboriginal and Remote Health

Opportunities include:

- Theatre
- Renal dialysis
- Emergency
- Midwifery
- Medical
- Surgical
- Prison Health
- Paediatrics
- Intensive Care Unit
- Mental Health
- Alcohol and Other Drugs
- Oncology
- Primary health care - urban and remote
- Locations include Alice Springs, Darwin, Katherine, Palmerston, Tennant Creek, Nhulunbuy and various remote communities.

Incentives

Making the move to the Northern Territory has its perks. Become a nurse or midwife in Alice Springs, Darwin, Katherine, Palmerston, Tennant Creek, Nhulunbuy and various remote communities and receive:

- Relocation support and relocation allowance
- 6 weeks of paid leave every year
- Parental leave
- Professional development allowance
- Post-graduate qualification allowance
- Exemplary practice allowance
- Shift responsibility allowance
- On call allowance
- Composite salary allowance
- Conference and training support
- Scholarships, training and education support

Explore flexibility with remote health

Working in a remote area of the Territory is not just once-in-a-lifetime cultural and clinical experience - it may also provide the accelerated career opportunities you have always wanted.

Remote area nursing in the Territory offers unique and varied experiences. You will have the opportunity to develop your clinical skills and knowledge to the full potential of your scope of practice- beyond anything you ever expected.

Testimonial

Kate Gasiorowski

Registered Nurse, Nhulunbuy, East Arnhem region



“ I think the most impactful parts of my job here is bringing my skills and health care to the community. We interact with the cultural ways; we provide and work with bush medicine and local culture. I moved here from South Australia, to get away from winter, to be able to use my experience and skills in a remote environment. I love it up here there is no traffic lights, a very close-knit community, and a cultural experience you can't get anywhere else.

Here you can really advance professionally, lifestyle especially for a family with young children is amazing. It's just the whole package is amazing and you're helping in a community that really needs it.

The opportunities here in the NT are second to none.

You would not get these opportunities anywhere else, and definitely not down south. You can advance much quicker; definitely with management, there is a lot of flexibility to move between different departments and gather new skills. There is a lot of support for post-graduation support and education.

On the weekends, there is a lot to do! The fishing is phenomenal, the camping is incredible, the beaches are spectacular and empty. There's 4WD'ing, sailing, plenty of clubs and sporting activities to do here. And just explore the region, you've got all the Top End to explore, and SE Asia is right on your doorstep.”

Allied Health

In the Northern Territory, being an Allied Health professional is more than just a job - it's a calling. It's our vision to become leaders in remote and urban health care. That's why we're dedicated to providing innovative, culturally safe, person-centred care to everyone within the Northern Territory. In fact, as an Allied Health professional, you have the option of working in Darwin, Alice Springs or the regional centres of Katherine, Tennant Creek or Nhulunbuy.

You will make a positive impact on the health and wellbeing of a culturally rich and diverse population. All while working in a supportive workplace culture that promotes multidisciplinary interactions, research and clinical education.

With over 600 allied health professionals who work across urban, rural and remote areas of the Territory, you'll have access to attractive pay and employment conditions, as well as opportunities to develop your skills and broaden your experience.

Services

Being an Allied Health professional in the Territory allows you to work across a wide range of therapeutic, diagnostic, scientific and other health-related industries, such as:

- Audiology
- Medical Laboratory Science
- Nuclear Medicine Technology
- Nutrition and Dietetics
- Occupational Therapy
- Oral Health Therapy
- Orthoptics
- Pharmacy
- Physiotherapy
- Podiatry
- Prosthetics and Orthotics
- Psychology
- Radiography
- Social work
- Sonography
- Speech Pathology
- Allied Health Assistants and Technicians

As an Allied Health professional, you'll be working across the full spectrum of health, such as primary care, community services, aged care, rehabilitation, mental health, trauma management, acute care, health promotion, clinical planning and policy as well as participating in research.

Job roles in allied health include:

- An Allied Health Professional with the Children's Development Team
- Visiting remote communities with a Community Allied Health team
- Senior Physiotherapist/Occupational Therapist with Seating Equipment Assessment and Technical (SEAT) service
- Remote Oral Health Therapist
- Part of the Renal Pharmacist team working across both acute settings and external dialysis units
- Pharmacists with Hospital in the Home services
- National Critical Care and Trauma Response Centre Physiotherapist, Occupational Therapist, Pharmacist or Radiographer
- Senior Allied Health Development Officer
- An Allied Health Professional with the Aged Care Unit
- Allied Health professionals with both acute and community-based Mental Health and Alcohol and other Drug services
- Ultrasonography outreach programs to all areas and regions of the Northern Territory
- Training of remote X-ray operators at Royal Darwin Hospital and Alice Springs Hospital with follow-up visits to remote clinics

Incentives

As a health professional in the Territory, you may be eligible for:

- 6 weeks of annual leave
- Annual professional development allowance
- Remote living subsidies in some areas
- Work-life balance initiatives
- Relocation assistance
- Study or research assistance
- Professional practice supervision/mentoring.

Explore flexibility with remote health

For those looking for a uniquely Australian experience, all our allied health professionals have the option to work and travel to remote communities, iconic cattle stations and small regional towns in order to provide holistic healthcare to Territorians across their lifespan.

Being a remote allied healthcare member provides opportunities for you to work across a wide range of therapeutic, diagnostic, scientific and other health-related industries such as:

- Audiology
- Health promotion
- Nutrition and dietetics
- Occupational therapy
- Pharmacy
- Physiotherapy
- Psychology
- Radiography
- Social work
- Speech pathology.

Pharmacy

A Pharmacy career in the Northern Territory is exciting, stimulating and very rewarding. Pharmacists working in the Territory are exposed to unique and diverse opportunities, patient groups, and clinical presentations that are uncommon in other areas of Australia. Pharmacists are able to broaden their skill set not only in core clinical areas but also in key specialty areas including nephrology, infectious diseases and rural and remote medicine. The Territory is a place for adventure, a healthy work life balance and a place to truly call home if you are willing to give something new and exciting a go!

Pharmacists in NT Health work across the Northern Territory hospital network, including the larger departments of Royal Darwin Hospital, Palmerston Regional Hospital and Alice Springs Hospital as well as Gove and Katherine District Hospitals. Pharmacy teams have a skill mix of Pharmacists who are experienced and early career, offering great clinical support and the confidence of the safest care being provided to patients.

Medical Imaging

Medical Imaging services in the Northern Territory include X-ray, CT, MRI, Angiography, Nuclear Medicine and PET, Ultrasound and Mammography. An Interventional Radiology service is available at the Royal Darwin Hospital and Alice Springs Hospital, and medical imaging supports a variety of intra-operative procedures at these hospitals. Gove and Katherine District Hospitals offer X-ray, CT and ultrasound services.

Sonographers across all regions of the NT support outreach services to remote community clinics. A number of remote clinics have the necessary equipment to provide a basic imaging service; this service is provided by remote x-ray operators who have been trained at Royal Darwin Hospital and Alice Springs Hospital and hold a limited licence. These remote operators are provided with ongoing training and support in the form of site visits, tutorials and education, and access to 24/7 phone assistance from radiographers at Royal Darwin Hospital.

Testimonial

Chastina Heck

Hospital Pharmacist, Nhulunbuy, East Arnhem region



“ The thing that I love the most about working here, in this location, is that very few people get to say they ever lived or work here in their lives and I get to do that in one of the most beautiful parts of Australia.

The thing I love most about living here in Nhulunbuy is firstly the really short commute to work it takes me all of 2 minutes, door to door which is excellent. I love the number of opportunities for adventure, both mid-week and also on the weekends. It's not unusual for us to catch up with friends for a campfire on the beach on a Wednesday afternoon say and busy planning where do we go next on the weekend. Boating, fishing camping, really quite spoilt for choice.

The opportunities for my career now are so much more than before I came to work in East Arnhem. My managerial skills have been developed and my critical thinking, my problem solving and confidence in myself, about how I know that is the right decision, has definitely grown since moving here. ”

Testimonial

Dave Outen

Senior Radiographer for the Gove District Hospital Medical Imaging Service



“What I love most is the people and our patients that live here in this community of East Arnhem Land. The Yolgnu people. They have an uninterrupted connection to country and culture which has gone on for centuries if not thousands of years, these are the people who live here in Arnhem Land and that’s why I’m here to help them.

I love working in a small hospital environment such as this place in Gove District hospital. , I know all staff by their first name, and we discuss patient presentations in much more collaborative model than you might find in a larger hospital, its a much more caring model, its a framework that is certainly encouraged by the hospital executive in Gove.

The township of Nhlunbuy is a tropical town right on the coast on the gulf of Carpenteria, it’s got absolutely pristine waters to the north, east and south and some of the best fishing I think in the country. There is some fantastic 4WD tracks, beaches, camping, fishing spots, freshwater springs, and waterholes, so if you like the Outdoor life, it’s a good place to come and live. There are no traffic lights in Nhlunbuy, I live one minute away from the Hospital, there are great opportunities to work and expand your education here and if you want a change, a bit of a sea change, it’s certainly something I’d definitely recommend.

I came here first as a radiographer/sonographer, and since I’ve been working here, we’ve put in a CT scanner. Training opportunities are provided in the capital in Darwin, so I’ve improved my skills in the last five years. And now I’m in one of the enviable position of being a CT/radiographer/Songographer I think there are only a handful of people with those qualifications in the country, so if yours still interested in education and learning, I think it’s a great place to come.”

Oral Health

Progress your career in dentistry and oral health in the Northern Territory - where the challenges and opportunities are like nowhere else.

Whether you choose to work in the city of Darwin or in the rustic beauty of the Northern Territory's remote areas, a career as a dental practitioner or dental professional gives you the opportunity to live and work across the Territory. Work in community clinics in urban centres and travel to remote communities while soaking in the rich and diverse Territory landscape.

We're committed to helping your career growth and professional development with training and ongoing support.

Services

Come for the lifestyle, stay for the diversity and career success. As a dental practitioner or dental professional in the Territory, you can develop your career and explore opportunities in a diverse range of clinical and leadership fields.

Job roles in Oral Health include:

- Dentists
- Dental Therapists
- Oral Health Therapists
- Dental Prosthetists
- Dental Assistants

Incentives

As a health professional in the Territory, you may be eligible for:

- 6 weeks of annual leave
- Annual professional development allowance
- Remote living subsidies in some areas
- Work-life balance initiatives
- Relocation assistance
- Study or research assistance
- Professional practice supervision/mentoring.

As a dentist, you may be eligible for:

- 6 weeks of annual leave
- Annual remote and retention allowance
- Annual professional development allowance
- Private practice allowance
- Remote living subsidies in some areas
- Work-life balance initiatives
- Relocation assistance

As a dental therapist, oral health therapist, dental prosthetist or dental assistant, you may be eligible for:

- 6 weeks of annual leave
- Remote living subsidies in some areas
- Work-life balance initiatives
- Relocation assistance

Explore flexibility with remote health

We provide oral and dental health general and emergency services to all our community health centres, and through remote and mobile dental facilities. Positions for dentists, dental therapists, oral health therapists, dental prosthetists and dental assistants across the Territory are highly regarded for the experience and skills gained both clinically and culturally.

As a dental practitioner, you have the option of developing your career with clinical leadership, management and safety and quality roles.



Aboriginal Health Practitioners

There's more to healthcare than providing high-quality care to your patients. You need to be empathetic, knowledgeable and, most importantly, understand how to integrate with cultures and communities. Aboriginal and Torres Strait Islander health workers and practitioners bring unique and invaluable skills to the health sector, and are the link between the traditional and western health systems.

Aboriginal and Torres Strait Islander Health Workers and Practitioners work collaboratively with other health professionals to improve the health and wellbeing of their community. In the Northern Territory, we're committed to enabling access to timely, quality, patient-focused healthcare.

We're on the lookout for dedicated and motivated Aboriginal Health Practitioners and Workers that are passionate about delivering culturally safe clinical care services to Aboriginal and Torres Strait Islander individuals, families and communities. Make a difference in the lives of Northern Territory's Aboriginal communities in Alice Springs, Darwin, Katherine, Palmerston, Tennant Creek, Nhulunbuy and other remote areas

Services

As independent practitioners, Aboriginal and Torres Strait Islander Health Practitioners and Workers work collaboratively with other clinicians - including doctors, nurses, midwives, allied health and oral health practitioners - in many health settings, such as:

- Acute Care
- Forensic Mental Health
- Prison Health
- Cardiac Care
- Palliative Care
- Child Health
- Men's Health
- Women's, Children's and Youth Health
- Population and Primary Health Care

There is a wide range of Aboriginal Health Practitioner and Worker positions available throughout the Northern Territory - from fresh graduates to experienced practitioners.

Incentives

Move to the Territory and explore the benefits, which may include:

- 6 weeks of annual leave
- Cumulative sick leave
- Scholarships, training and education support
- Flexible work arrangements
- Employee assistance program for employees and family members



Primary Care Sector (NT PHN)

Diverse work goes with the Territory. Supercharge your career in the Northern Territory Primary Care sector.

Experience a career in primary health unlike anywhere else in the world. In the Northern Territory, you'll get to participate in some of the most beautiful, challenging and rewarding workplaces totally unique to the country. So get ready to build incredible connections and have once-in-a-lifetime adventures that will stay with you forever.

From the Territory's remote areas that have an average population size of 3,000 to more urban positions in the tropical city of Darwin, we have a variety of primary health positions available.

We're dedicated to supporting you in your career growth by offering specialised training, access to support networks and extra incentives to help you settle in.

A job in the Territory isn't just a change of scenery - it's an opportunity to advance your career in a place you'll never want to leave.

Services

Jump-start your career in the Territory with exposure to different clinical and cultural experiences. As a primary care worker, you'll learn about tropical medicine and chronic diseases while embarking on a unique and adventurous lifestyle.

Our available jobs include GPs, nurses, allied health including mental health positions and Aboriginal health workers.

The [Rural Workforce Agency NT](#) can place primary health care professionals in Aboriginal community-controlled health services, GP practices and not-for-profit organisations across urban central Darwin and rural and remote locations throughout the Northern Territory.

Not keen on working in a clinic? No problem. We also offer outreach work opportunities.

Job roles include:

- Doctor
- Nurse
- Allied Health professional (i.e. physiotherapist or nutritionist)
- Aboriginal Health Practitioner

Incentives

Looking for a job role with benefits? Working in the primary care sector comes with incentives that make moving to the Northern Territory a whole lot easier. Enjoy a competitive salary, bonuses, free accommodation*, and flexible working conditions. You can even develop professional skills through online webinars and gain access to extra learning opportunities, grants and scholarship options for professional development.

Receive on-the-job training for emergency, critical care and mental health and learn more about the Australian Aboriginal culture - the oldest living culture in the world.

We also offer:

- Health professional relocation grants
- Flexible working contracts
- Continuous professional development grants
- Locum GP leave cover
- Specialist recruitment packages
- Orientation grants
- Site visit grants
- Workforce development grants

Living and working in remote areas

Work in one of the Northern Territory's remote communities and experience the real Australia.

There are over 76 remote communities in the Northern Territory. Located throughout the Northern Territory, our remote areas will give you the opportunity to see some of the most unique medical presentations and learn from experienced clinical specialists. If you live in a remote location or choose to provide outreach services from an urban area, you may have to travel on unsealed and single lane roads or light aircraft.

NT Health Primary Health Care centres are found in both urban and remote areas and provide a wide range of services - such as preventative health checks and chronic disease reviews, immunisations, oral and hearing health, health promotion and education, provision of allied health and aged care services within the home environment. NT Health also supports an after-hours on-call service for emergency presentations in remote settings.

If you would like to discover more of the Northern Territory while working in health, you can see a full list of all Primary Health Care clinics [here](#).

The NT Governments [Bushtel](#) website also has excellent information about living and working in remote locations!

Why go remote?

Work in the remote Northern Territory and learn skills that you won't receive anywhere else in the world. You'll engage with the community, share their challenges, gain knowledge and witness first-hand how your work makes an impact.

Working in the Territory gives you the chance to make a real difference in the lives of others. You'll be able to work in many different sectors, including regional and remote health delivery, Aboriginal health, tropical health and mainstream medicine, nursing and midwifery, allied health and oral and hearing health service delivery.

Some of the advantages of working in the Northern Territory's remote areas include:

- Being supported by strong multidisciplinary teams and networks
- Working across clinical areas that allow you to develop and grow within your full scope of practice
- Flexible working arrangements
- Accelerated career opportunities
- Learning from, and growing with your community and taking part in unique cultural activities not experienced elsewhere in Australia
- Engaging in innovative clinical research projects

Incentives

The Northern Territory has a great lifestyle, spectacular landscapes and amazing medical, nursing and midwifery, allied health, oral health and Aboriginal Health Practitioner opportunities not available elsewhere in Australia.

Establish your career in one of the Territory's remote areas, and receive a generous relocation package based on your commencement level, employment type (e.g. full time or casual) and location of your recruitment, as well as a flexible job role that fits around your lifestyle.



Services

Many communities and surrounding outstations in the Territory do not have easy access to hospitals or doctors. However, Population and Primary Health Care have centres located throughout the regional and remote areas of the Territory that are supported by a wide range of outreach services. Each centre provides a 24-hour, 7 day emergency response through health staff on call, as well as providing all sorts of health care services to the community.

Services and programs the centres offer are:

- Antenatal care
- The Healthy Under 5 Kids Partnering Families Program
- The Australian Family Nurse Partnership Program
- The Healthy School-Aged Kids Program for infants and children
- Childhood and adult immunisation
- Preventable chronic conditions program
- Women and men's screening
- Infectious and communicable disease prevention and control
- Emergency care and referral to hospital and specialist level care when required

These services and programs are focused on supporting early identification and intervention, strengthening

patients' social and emotional well-being and solving the social issues that affect people's health.

We offer fly-in/fly-out services through our outreach teams so you can work in remote areas all across the Northern Territory, or for those who don't like flying, we may be able to drive you to a few locations via 4WD.

Services provided by these outreach teams include:

- Aged care
- Alcohol and other drugs
- Cancer screening
- Community allied health
- Environmental health
- Hearing health
- Mental health
- Oral health
- Public health

Our outreach teams also provide a range of culturally responsive well-being programs.

The Territory

A new adventure every day goes with the Territory.

Live and work in a place that offers more career growth, work flexibility and a relaxed lifestyle.

The Northern Territory isn't just Australia's most breathtaking and unique place to visit - it's also the perfect place to raise a family, accelerate your career and experience a culture rich in Aboriginal history.

Whether you're coming all the way from overseas or moving from within Australia, you'll need to know all the best spots in the Territory - from the city of Darwin to the quiet beauty of our remote communities. Find out just how the locals live and learn more about your new home in the Northern Territory.

Discover what it's like to live, work and thrive in some of the Territory's most unique and vibrant areas.

Living in the Top End



Top End

● NT Health ▲ ACCHO





Situated on the very edge of the Northern Territory, the Top End (including Darwin and Palmerston cities and their surrounds) is home to friendliest and most culturally diverse areas in Australia.

The Top End region incorporates the north/north-east section of the Territory including the Tiwi Islands. It encompasses 6 townships which include Batchelor, Jabiru and Adelaide River. The region also consists of 17 communities including Wadeye and Maningrida, 4 town camps and 138 outstations.

Darwin, Palmerston and surrounds

The Larrakia people are the traditional owners of the Darwin Region, from Cox Peninsular in the West, to Gunn Point in the North, Adelaide River in the East and down to the Manton Dam towards the South. The Larrakia people have a deep, spiritual connection with the land and sea, within the Top End.

Unspoiled national parks and breathtaking waterfalls, the Top End is home to some of the Northern Territory's most stunning landscapes.

A tropical oasis, the Top End is renowned for its tropical weather, spectacular sunsets, great fishing spots, and laid-back lifestyle, and includes unique Australian landmarks such as the World Heritage-listed Kakadu National Park and Litchfield National Park, and coastal Tiwi Islands.

You can spend the afternoon at [Casuarina Square](#) or [Gateway Shopping Centres](#), spend your Sunday at the Mindil Beach Markets or watch the sunset from Cullen Bay. If you want to get out of town, take the family to one of the many iconic national parks and swimming holes such as Howard Springs Nature Park or Berry Springs.

How to get there

You can travel to the Top End by:

- **Plane:** Darwin has a modern airport close to the city. Darwin International Airport is a hub for many airlines, with international services (to Bali, Singapore, Dili, China and the UK) and connecting flights to Australian state capitals.
- **Car:** The Stuart Highway connects Darwin to South Australia, Queensland and Western Australia. A great way to see Australia however, it is best to plan your drive in advance noting some distance between fuel stops and accommodation options.
- **Train:** The Darwin Railway Station is located on Berrimah Road at East Arm, right next to the port. This passenger terminal is where you can experience [The Ghan](#) - one of the world's most luxurious and memorable train journeys.

The Culture

The Top End has a culturally diverse Aboriginal population, consisting of a number of Aboriginal communities and language groups that are situated along some of the most picturesque coast lines, inland waterways and escarpment country.

The Top End's also boasts a rich history of multiculturalism which is shaped by Aboriginal people, newly arrived migrants from all parts of the world, as well as established multicultural communities. Local communities are welcoming, vibrant and inclusive enabling individuals and groups to achieve their potential and the City to prosper as a centre of culture, creativity and learning.

Families and individuals alike come to the Top End to enjoy the tropical relaxed lifestyle, cultural festivals, Mindil Beach Markets, the Darwin Waterfront and wave pool, jumping crocodiles, or the national parks.

Health Services

Hospitals

There are 3 major hospitals in Darwin, the Royal Darwin and Palmerston Regional Hospital, located across 2 campuses, and the [Darwin Private Hospital](#).

The Royal Darwin Hospital (RDH) is a tertiary hospital with 370 beds. Providing services to the Darwin urban population as well as serving as a referral centre to the Top End of the Northern Territory, a population of around 140,000, including rural and remote Aboriginal communities.

There is a strong clinical focus on Aboriginal health and infectious diseases. RDH works closely with the other hospitals in the Northern Territory including the provision of outreach services. RDH is a tertiary teaching hospital affiliated with Flinders University, Charles Darwin University, the Menzies School of Health Research, and the National Critical Care and Trauma Response Centre.

Palmerston Regional Hospital (PRH) is a subacute service hospital with 116 beds. PRH opened in 2018 as an extension of Royal Darwin Hospital. Primary Health Care provides community allied health and aged care, oral health services, environmental health, public health, and remote health centres.

Acute care is provided through RDH and PRH which deliver a range of clinical services including:

- Emergency
- Surgery and critical care
- Infection prevention
- Gynaecology
- Maternal and child health
- Paediatrics
- Orthopaedics
- Palliative care
- Cancer care
- Rehabilitation
- Geriatric care
- Allied health
- Medical imaging
- Pharmacy, and
- Dialysis.

There is also a wide range of highly-skilled and qualified specialist clinics, GP practices, and several Aboriginal Community Controlled Health Organisations including the [Danila Dilba Health Services](#) operating throughout the area.

Top End Mental Health and Alcohol and Other Drugs Service

The Top End Mental Health and Alcohol and Other Drugs service is comprised of 2 work units:

- the Top End Mental Health Service (TEMHS); and
- the Alcohol and Other Drugs Service (AODS).

Top End Mental Health and Alcohol and Other Drugs service provide services to the Darwin urban (including



📍 Litchfield National Park, Top End

Palmerston), Darwin rural, East Arnhem and the Katherine health districts.

TEMHS is a specialist clinical service that provides assessment, treatment and therapeutic intervention for people experiencing a mental illness or mental health problem. Priority access to mental health services is determined in accordance with clinical need and risk assessments. TEMHS is comprised of the following services:

- Mental Health Access Team
- Cowdy Ward
- Joan Ridley Unit
- Youth Inpatient Program
- Darwin and Palmerston Adult Mental Health
- Remote Mental Health
- Perinatal Mental Health
- Child and Adolescent Mental Health
- Forensic Mental Health

Specialist mental health services are provided by NT Health in urban, rural and remote communities to people who are experiencing significant difficulties in their day-to-day life because of mental health problems or mental illness.

People will normally be referred to the service or will become service users after an attendance at a hospital

emergency department or local health centre.

Mental health clinicians' work closely with General Practitioners and other government and non-government care providers to ensure the best recovery focussed outcomes for service users.

Importance is placed on culturally secure service provision, which includes the routine use of interpreters, the employment of Aboriginal Mental Health Workers and Practitioners and collaboration with Ngangkari (traditional healers) and Aboriginal Health Workers in rural and remote communities.

Services are delivered within legal and regulatory parameters, established at Commonwealth and Northern Territory levels, and in fulfilment of international treaties. The primary operational legal principles and parameters are contained in the Mental Health and Related Services Act 1998 and related documentation.

Mental health services also have dedicated quality and education teams who coordinate and deliver mental health related education to staff, as well as coordinate and undertake continuous quality improvement activities across the services.

Population and Primary Health Care

Population and Primary Health Care provides care in the following areas:

- Public Health including the Centre for Disease Control and Environmental Health
- Oral Health
- Cancer Screening Services
- Community Allied Health and Aged Care Services
- Hearing Services
- Outreach Services
- Prison Health
- Remote Health Centres including, but not limited to Pirlangimpi, Belyuen, Milikapiti, Batchelor, Peppimenarti, Nauiyu, Borroloola, and Wadeye.

Remote Aboriginal communities offer exciting opportunities for experienced Primary Health Care Nurses and Medical Officers to make a difference in the health of the community. The positions contribute to improving the health and wellbeing of families living in remote communities in the Top End. The primary objective of these dynamic positions is to work collaboratively with community members and the broader multi-disciplinary team in the delivery of preventative health programs - adult health, maternal health, under 5's, youth & adolescent health and management of chronic conditions. These roles contribute to community health action by targeting and improving health outcomes,

promoting wellbeing, treating illness, maintaining health systems and provide education and training to community based workers and junior staff members.

These positions offer an exciting experience living and working in remote communities in the Top End of Australia. There are many opportunities to enjoy camping, off road tracks and exploration of the region. Permits are available from the Traditional Owners and Local Community Councils.

Working in the Top End

In addition to the Health, the Top End offers employment opportunities across several government and private enterprise industries including tourism, horticulture, forestry, education and mining.

Darwin is home to the Robertson, Larrakeyah and Coonawarra Defence Barracks and the RAAF base, a large employer across the region.

[Discover jobs in the Top End.](#)



 Litchfield National Park, Top End



📍 Mindil Beach Sunset Markets, Darwin.

Property in the Top End

The Top End has a range of home options to suit your lifestyle. Homes are designed with outdoor living in mind - from spacious inner-city apartments with balconies to sprawling acreage properties with large outdoor entertaining areas.

For information on the real estate market in the Northern Territory, check your favourite online real estate website for accommodation options.

Childcare and Education

A wide variety of childcare and educational choices are available across Darwin and the Top End remote areas ranging from public government provided schools to private Catholic, Lutheran and independent non-denominational colleges.

The standard curriculum program is free for all students enrolled in government schools.

Charles Darwin University provides an extensive range of higher education and vocational education and training options available both on campus and online. Darwin is the best place in Australia for graduates to find employment with 71.8% of undergraduates living in Darwin gaining full-time employment four months after completing their degree.

[Discover schools in the Top End.](#)

The Weather

The Top End is known for its tropical climate and unlike the rest of Australia, it only has 2 seasons - the Dry and the Wet.

During the Dry season Top End residents enjoy blue skies, and average of sunny 32 days and 20 nights. The humidity drops to a comfortable 60-65%, making it the perfect condition for outdoor living.

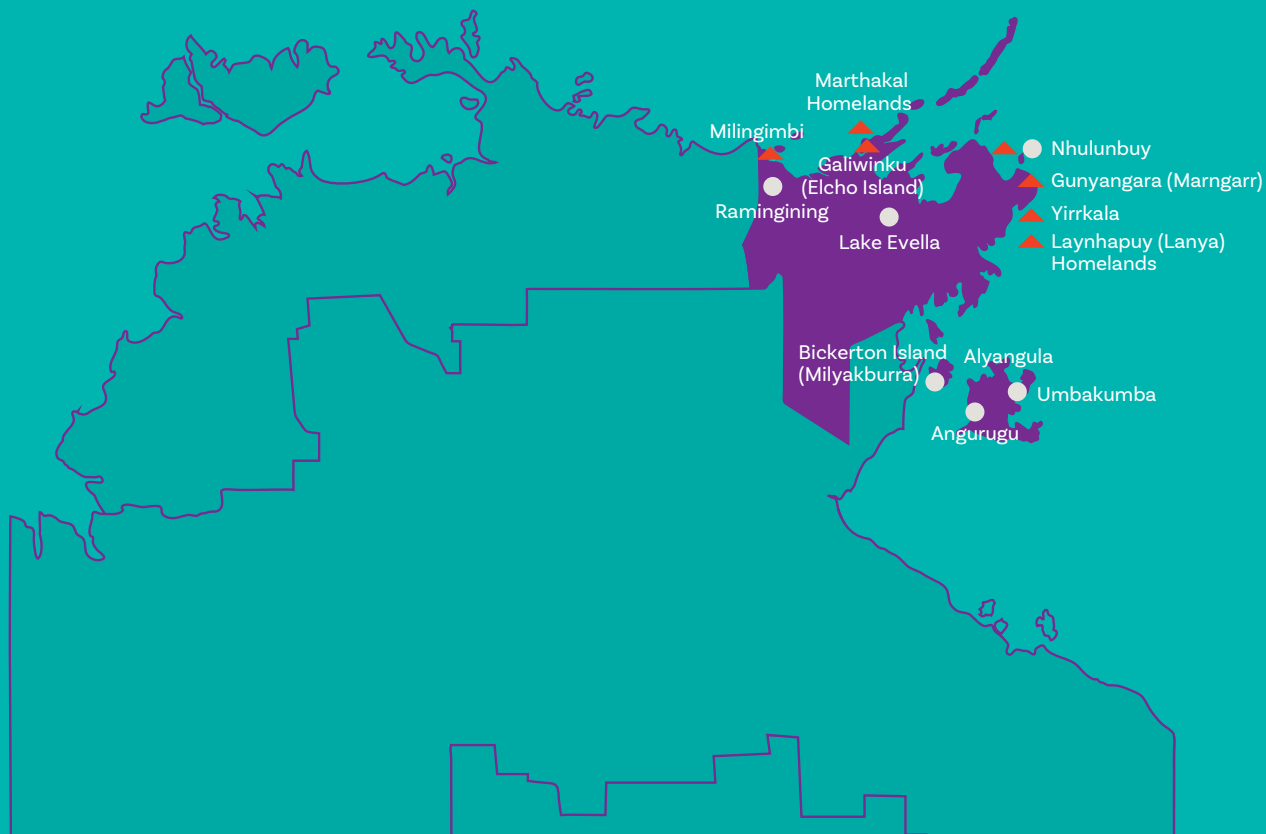
The Wet season generally starts in November/December and usually ends in April. Temperatures will reach the mid-30s and an increase in humidity, brings refreshing monsoonal rains and spectacular storms.

Living in East Arnhem



East Arnhem Region

● NT Health ▲ ACCHO





The East Arnhem region is located in the far north of the Northern Territory and covers an area of about 41,000 square kilometres extending west to Milingimbi and south to Groote Eylandt and has a population of around 16,000. It encompasses the towns of Nhulunbuy on the Gove Peninsula, Alyangula on Groote Eylandt, the islands of Elcho and Milingimbi and the major Aboriginal communities on the mainland.

The East Arnhem region accounts for three per cent of the Northern Territory's population. Throughout the region, there are more than 100 homelands and outstations that are almost exclusively Aboriginal in population and range from 30 to 200 people.

With a population of less than 4,000 people, Nhulunbuy is a remote township located on the Gove peninsula in East Arnhem and as the hub for East Arnhem Regional Health Service, services the Nhulunbuy Township, provides the Acute care Hospital for the region, and provides outreach medical services to four remote health centres on Groote Eylandt.

All regional health services in East Arnhem are provided and managed by the Regional Executive Director. East

Arnhem works in close partnership with Aboriginal Community Controlled Health Organisations which operate a number of health care services dispersed across the region.

Health services in the region are comprised of acute care, primary health care and mental health and alcohol and other drugs services. Acute care is provided through the Gove District Hospital which delivers a range of medical, surgical, emergency, gynaecology, maternal and child health, paediatrics, ophthalmology, palliative care, cardiology and dialysis.

Primary health care provides community allied health and aged care, oral health services, environmental health, public health, and remote health centres.

Home to the Yolngu people, one of the largest Aboriginal groups in Australia, it is an area rich in Aboriginal culture and is a diverse paradise surrounded by rugged coastlines and pristine white sandy beaches. Spend your mornings strolling along the unspoiled beach on the Arafura Sea, or cast a line out and take your catch to one of the local restaurants, where they will prepare it for you. It doesn't get any fresher than that!

How to get there

You can travel to East Arnhem by:

- **Plane:** Flights to East Arnhem are available through Air North. You will land at the local [Gove Airport](#) and taxis are available to take you to your accommodation.
- **Car:** East Arnhem is roughly 1,050 kilometres, or a 12 to 14-hour drive, from Darwin via the Central Arnhem Road. This road connects with the Stuart Highway 50 kilometres south of Katherine. Over 600 kilometres long, the journey is on a gravel road, so a 4WD vehicle and planning your drive in advance, as distances between fuel stops and accommodation options is recommended.

The Culture

Yolngu culture in northeast Arnhem Land – a heartland of Aboriginal culture and land rights – is among the oldest living cultures on earth, stretching back more than 40,000 years. Yolngu people of Arnhem Land speak a dozen dialects of a language group known as Yolngu Matha. English is very much a second (or thirteenth) language. The people of East Arnhem work hard to protect, prolong and develop its rich, ancient Aboriginal culture. Each August, East Arnhem host the [Garma Festival](#) - a celebration of Yolngu culture where the cross-cultural exchange is immersive for all that attend.

Families and individuals alike come to East Arnhem to enjoy the beaches and natural terrains giving locals and visitors a happy escape from the hustle and bustle of city living. This is the perfect place for outdoor lovers who just can't get enough of fishing, bush-walking, camping and bush-tucker safaris.



Health Services

The [Gove District Hospital](#) (GDH) is located in the town of Nhulunbuy on the Gove Peninsula. GDH is a 30 bed hospital and provides a broad range of medical, surgical, emergency, paediatric, respite and maternity services to the East Arnhem Region population. It is the referral centre for 15 remote community clinics that refer patients to hospital for inpatient, outpatient and specialist care.

GDH offers a number of non-admitted services, including Ophthalmology, Cardiology and Gynaecological services.

The key range of health services provided across the Gove District Hospital encompasses:

- 24 hour accident and emergency care
- general surgical, medical and paediatric care
- two respite places and two emergency respite places
- elective and 24 hour emergency surgery
- maternity services including caesarean capability
- visiting specialists care
- 24 hour medical imaging (on call service after hours)
- pharmacy and pathology
- support services including engineering, catering, housekeeping and laundry, stores, mortuary and cyclone shelter.

East Arnhem is also serviced by a district medical officer who provides expert clinical advice and may refer serious cases to the local hospital or to the [Royal Darwin Hospital](#) via air.

There are 3 Aboriginal Community Controlled Health Services in East Arnhem - [Miwatj Health Aboriginal Corporation](#), [Laynhapuy Homelands Aboriginal Corporation](#), and [Marthakal Homelands Health Service](#).

Working in East Arnhem

Employment opportunities are available in occupations ranging from teaching to heavy machinery operators. The largest employer in East Arnhem is the mining industry, which earns the region over \$1 million a year.

[Discover jobs in East Arnhem.](#)

Property in East Arnhem

Housing choices range from units and flats to homes for families, and you will find some specialty stores and a bank at the shopping centre. For information on the real estate market in East Arnhem, check your favourite online real estate website for accommodation options.

Childcare and Education

There are currently 12 primary and secondary schools, as well as 6 early childhood and childcare schools located across the East Arnhem region. The majority of these are public schools.

[Discover schools in East Arnhem.](#)

The Weather

Just like the Top End, East Arnhem has a tropical climate, and only the 2 seasons.

During the dry season East Arnhem residents enjoy sunshine filled 32 days and 20 nights. The humidity drops to a comfortable 60-65%, making it the perfect condition for outdoor living.

The wet season generally starts in November/December and usually ends in April. Temperatures can reach 35 and with an increase in humidity, bringing the refreshing monsoonal rains and spectacular storms.



📍 Buku-Larrnggay Mulka (Yirrkala Art Centre), East Arnhem

Living in Big Rivers





Big Rivers is an area of stunning backdrops, ancient Aboriginal culture and breathtaking cliffs that glow in the light.

It is home to the town of Katherine, the traditional land of the Dagoman, Jawoyn and Wardaman people and has been considered an important meeting place for Aboriginal people for thousands of years.

A haven of natural beauty, the Big Rivers region extends from the Western Australia border to the Gulf of Carpentaria and has an estimated population of over 20,000 people.

Nestled amongst some of the most amazing natural landscapes in the world, the Big River locals spend most of their time outdoors. Nature-based activities such as camping, fishing, canoeing, bush-walking and swimming are a big part of the Big Rivers lifestyle.

Katherine

With a population of approximately 11,000 people, Katherine is the closest town to the RAAF Tindal defence base. Situated on the banks of the Katherine River, it is the gateway to several tourist attractions, and services

the smaller regional centres of Pine Creek, Mataranka, Borroloola, Daly River and Timber Creek.

With abundant wildlife, tall ghost gums, and tourist destinations such as Nitmiluk National Park, Cutta Cutta Caves Nature Park, and the Mataranka Hot Springs, the Big Rivers Region is a unique and breath-taking environment.

How to get there

You can travel to Katherine by:

- **Car:** Katherine is situated 320 kilometres southeast of Darwin -a comfortable three hour drive.
- **Bus:** The [Greyhound Bus](#) services Katherine. You can find their office at the [BP Travel North](#) on Katherine Terrace.
- **Train:** [The Ghan](#) is Australia's most spectacular train trip and stops for a few hours in Katherine.



📍 Pop Rocket Cafe, Katherine, Big Rivers region.

- **Plane:** The Katherine Tindal Civilian Airport is located approximately 15 km south of town, along the Stuart Highway. Flights can be booked via [Airmorth](#).

The Culture

The Big Rivers region has a population of just over 24,000, 60% of which identify as Aboriginal.

Katherine's population grows significantly during the dry season as tourists travel from the colder parts of Australia in search of the warmth and sunshine of the Northern Territory. Katherine holds a great historical significance to its Aboriginal community as the traditional land of the Dagoman, Jawoyn and Wardaman people, it is considered an important meeting place for thousands of years.

Health Services

[Katherine Hospital](#) is a 40 bed non-specialist public hospital providing emergency, medical, surgical, paediatric and maternity services.

The key range of health services provided across the Katherine Hospital encompass:

- Emergency medicine services including an emergency department.
- General medicine and surgery services including

an adult medical surgical ward with 1 designated rehabilitation bed and 1 palliative care bed.

- Maternal and child health services including a paediatric ward combined with a day stay unit.
- Medical day stay unit, including delivery of chemotherapy.
- Integrated community and hospital services including tele-health services.
- Clinical support services including allied health, anaesthetics, radiology, CT Scanning and sonography services, pathology, specialist services including Specialist Outreach Northern Territory (SONT) surgical and outpatient consultations, mortuary services, rehabilitation step down unit, Indigenous and Remote Eye Health Service (IRIS) eye program, and operating suite/theatres.

Katherine services the surrounding communities via specialist outreach health services, allowing health professionals to experience and make a difference in health outcomes across the region.

The Katherine Family Medical Practice and [Bauhinia Health](#) are private general practices providing health services to the local area. The [Wurli-Wurlinjang Aboriginal Health Service](#) is Katherine's only Aboriginal Community Controlled Health Service, but the [Sunrise Health Service](#) and [Katherine West Health Board](#) also service the remote areas within Big Rivers Region.

Working in Big Rivers

There are jobs available now in Big Rivers. The largest industry sectors for the Katherine region include mining, agriculture, defence, forestry and fisheries, construction and tourism. High employing sectors include health, education and training and administration roles.

[Discover jobs in Katherine.](#)

Property in Big Rivers and Katherine

Family housing and unit accommodation are available with easy access to shopping centres, cinemas, hotels and cafes.

For information on the real estate market, check your favourite online real estate website for accommodation options.

Childcare and Education

There are 4 public primary schools located in Katherine - Katherine South Public School, Clyde Fenton School, Macfarlane Primary School and [Casuarina Street School](#). Each of these schools also has a preschool attached.

Katherine also has 2 high schools - 1 public and 1 private. Katherine High School is the public high school, catering for years from 7 - 12. St Joseph's Catholic College is the

private school, providing education from prep to year 12.

Kintore Street Special School caters for children with additional needs from 3 to 18 years old. Katherine High School is the only public secondary and middle year's school.

Katherine also has a distance education school, [Katherine School of the Air](#). This school has over 250 students over an area of 800,000 kilometres catering to primary and middle year student in remote or isolated areas.

[Discover schools in Katherine.](#)

The Weather

Big Rivers has a tropical climate. Temperatures range from 25-33°C in the wet season and 20-30°C in the dry season.

Katherine's dry season has low humidity and cool nights - some dropping as low as 10 . This is the perfect time to get outdoors with friends and family and enjoy the pristine parks and swimming spots.

The wet season starts in October and winds up in March, increasing the humidity and keeping people indoors more. The temperature can rise as high as 40 . But it also means refreshing monsoonal rain and storms, which breathe new life into Big River's tropical landscape.



📍 Katherine, Big Rivers region

Living in Barkly





Make the move to Barkly and experience the real Australia with large skies, far horizons and rustic, unique landscapes.

Located about 1,000 kilometres south of Darwin, the Barkly region is home to the Warramungu Aboriginal people. It is surrounded by rolling plains of grassland, long stretches of Australian bushland and breathtaking rocky hillsides that change colour with the setting sun.

Barkly is home to million-acre cattle stations, gold mining heritage sites and the authentic outback town of Tennant Creek. The Barkly Tableland runs east from Tennant Creek towards the [Queensland](#) border and is known as being one of the most important cattle grazing areas in the Northern Territory.

Tennant Creek

Tennant Creek is a close knit town with a population of 3,000 people. Tennant Creek features one main street down the centre of the town, lined with trees and friendly, locally owned stores. Everyone knows everyone - and a quick trip to the shops often turns into a catch-up with the neighbours.

The lifestyle in Tennant Creek is even more relaxed than the Top End region. Spend the weekends swimming at Mary Ann Dam or 4WD through the Davenport ranges. The town is enriched by the comforts of country culture and boasts a friendly and relaxed lifestyle while enjoying a range of supermarkets, cafes and pubs, hostels and motor inns.

How to get there

You can travel to Tennant Creek by:

- **Car:** Tennant Creek is 500 kilometres north along the Stuart Highway from Alice Springs and 1000 kilometres due south from Darwin. Travelling from Alice Springs will take just over 4.5 hours, while travelling from Darwin will take over 10 hours.
- **Bus:** The [Greyhound Bus](#) frequently services Tennant Creek.
- **Plane:** Tennant Creek has an airfield, and charter flights are easily arranged from either Darwin or Alice Springs. Air North also has some scheduled flights from Darwin and Alice Springs.

The Culture

The Barkly region is steeped in the ancient traditions and beliefs of its traditional custodians. Tennant Creek is Warramungu country; however, 9 Aboriginal groups call the area home. The strong Aboriginal presence makes Tennant Creek one of the best places to learn about Aboriginal life, history and land, traditions, culture and way of life.

From 4WDing in the Davenport Range National Park, to climbing the giant granite boulders of the Devil's Marbles or simply walking through the local national parks and reserves, the Barkly Region offers a relaxed lifestyle with opportunities for adventure.

Health Services

The [Tennant Creek Hospital](#) is a 20 bed facility providing emergency services and acute care across several clinical specialties. It also hosts a 16 chair renal unit provides a dialysis service to patients across the Barkly region.

Barkly has 3 Aboriginal Community Controlled Health Services - the Anyinginyi Health Aboriginal Corporation, Ampilatwatja Health Centre Corporation and Urapuntja Health service providing primary care services in Tennant Creek, Utopia and Ampilatwatja.

Remote clinics in Elliot, Canteen Creek, Alpururulum, Epenarra and Ali Curung are nurse-led and supported with visiting medical and other outreach primary and public health care services on a regular basis.

Working in Barkly

Tennant Creek industries include the mining, energy and tourism sectors. Opportunities for employment are available in these areas as well as administration, retail, education and the military police.

[Discover jobs in Tennant Creek.](#)



📍 Tennant Creek Hospital, Barkly region

Property in Barkly

Tennant Creek has a wide variety of family homes for rent and sale. There's opportunity to secure your own piece of land and build a home yourself.

For information on the real estate market in this area, check your favourite online real estate website for accommodation options.

Childcare and Education

Tennant Creek has a primary school and a high school - [Tennant Creek High School](#). There are also several remote schools where students are able to learn online.

The Weather

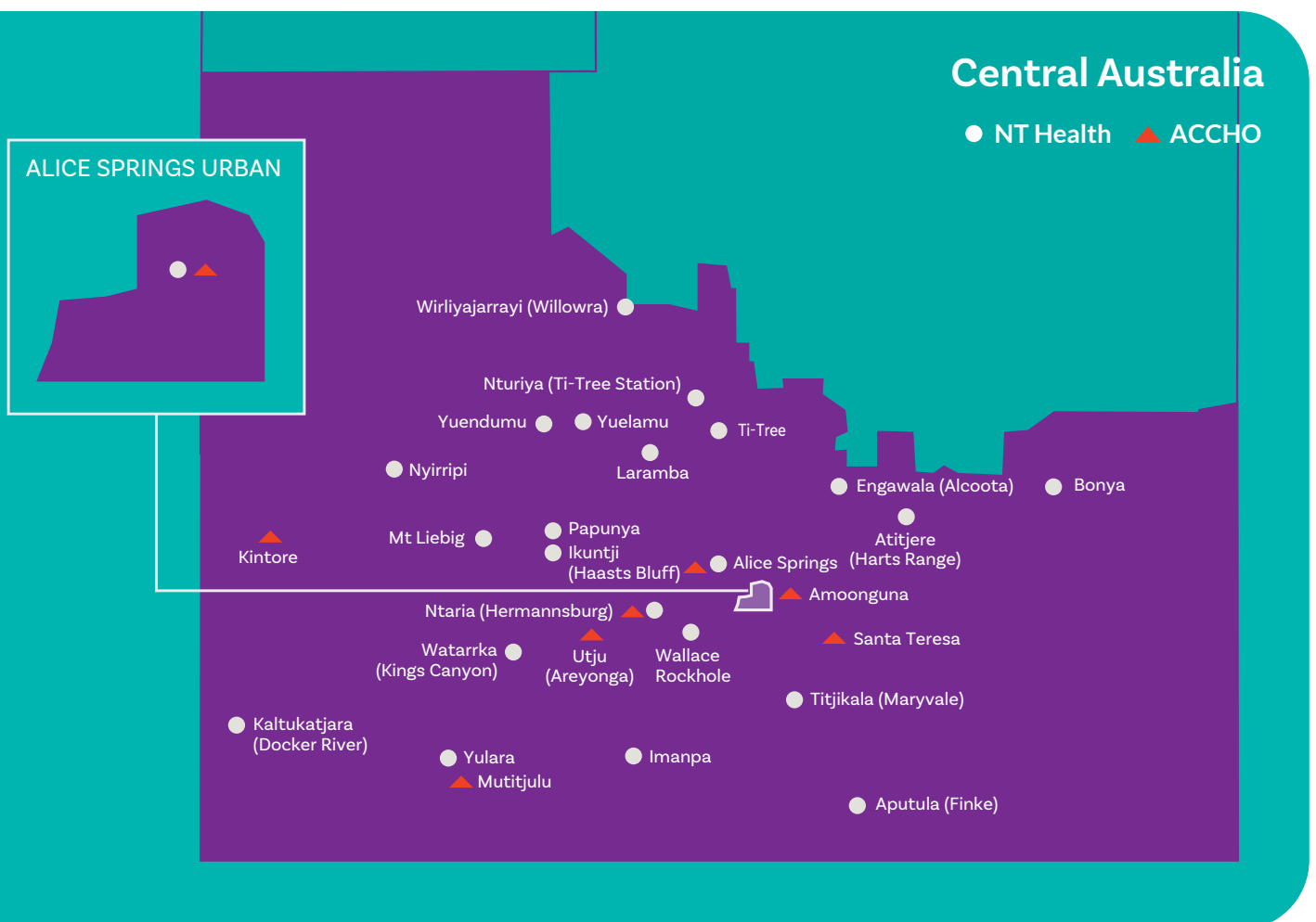
Like other areas across the Territory, the Barkly region experiences 2 very distinct seasons.

The dry season has low humidity and cool nights - some dropping as low as 13 .

The wet season starts in November and winds up in April, increasing the humidity and bringing the refreshing monsoonal rain and storms, which breathe new life into Barkly's landscape.



Living in Central Australia





Home to the some of the world's most stunning landscapes, Central Australia is largely known as the physical and spiritual heart of Australia. It is a popular tourism destination, with beautiful desert landscapes and impressive natural attractions such as the East and West MacDonnell Ranges, Finke Gorge, Uluru, Kings Canyon and Watarraka National Park.

Rich in Aboriginal culture, the Arrernte people are the traditional custodians of the lands Alice Springs is located on, having lived there for over 30,000 years. The Central Australia Region covers approximately 15 different indigenous language groups and a land area of 1 million square km.

Alice Springs

Just a few hours' flight from all of Australia's capital cities, and with over 29,000 residents, Alice Springs known as Mparntwe by the traditional owners, is a truly unique area to live and work.

Watch the sunrise from a hot air balloon, enjoy the swimming holes or meet Aboriginal artists in one of

the many art galleries. For those who have a taste for adventure, explore the desert on camel or mountain bike or attend the world-famous Finke Desert Race, Parrtjima Festival of Light, Red Centre Nats or the Henley-on-Todd Regatta.

Many families are drawn to the area due to the convenience of schools, parks and activities for the kids. It is only short drive out of Alice Springs to experience some of the amazing locations for which the region is famed, including Ormiston Gorge, Glen Helen, Ellery Creek Big Hole, Standley Chasm in the West MacDonnell Ranges and Emily and Jesse Gaps, Trephina Gorge, Arltunga and Ruby Gap in the East MacDonnell Ranges. Camping, hiking and mountain biking are drawcards in the area and locals will share tips on best places to go to have a relaxing getaway after the work week has ended.

How to get there

- **Plane:** [Alice Springs Airport](#) has connecting flights to all of the Australian state capitals, excluding Canberra.
- **Bus:** Book onto a [Greyhound](#) coach.
- **Car:** All the main roads to Alice Springs are sealed and well-maintained. Most journeys to and from Alice Springs involve hours or days of driving, taking in tourist attractions along the way, so planning your drive in advance noting distances between fuel stops and accommodation options is recommended.
- **Train:** From Alice Springs, you can experience [The Ghan](#) - one of the world's most luxurious and memorable train journeys.

The Culture

With deep spiritual origins dating back more than 30,000 years Alice Springs (or Mparntwe) has an abundance of rich culture and history.

The town is recognised as one of the most diverse and accepting communities in the country and the 29,000 residents have come from far and wide. As the gateway to many central Australian gems including the iconic Uluru, Alice Springs has a large population of travellers. The town is vibrant and the locals are known for their friendly and relaxed approach to life.

Health Services

The Alice Springs Hospital has 209 beds and specialises in general and emergency medicine, surgical, maternity and paediatric services. The Alice Springs Hospital is an accredited and fully equipped teaching hospital offering a range of secondary, and some tertiary inpatient, outpatient and specialist services, including a 10 bed intensive care unit, and renal dialysis centre catering for more than 400 patients.

The hospital caters for more than 65,000 admissions annually and with almost 84 per cent of patients being Aboriginal it cares for some of the nation's most vulnerable people, with high levels of morbidity and mortality, and many with conditions rarely seen elsewhere in the country, with disease burden and comorbidities being disproportionately high.

The medicine is incredibly diverse, complex and interesting with a prevalence of rheumatic heart disease, bronchiectasis, and chronic liver and renal disease, along with diabetes in a young population.

Primary and Public Health Care delivers Community Allied Health and Aged Care, Child and Family Health, Community Nursing, Oral Health, Prison Health and Environmental and Public Health. It also covers the management of remote health centres and the specialist outreach services to the centres.



📍 Mountain biking, Alice Springs, Central Australia



📍 Desert Mob, Alice Springs, Central Australia

The Mental Health Service provides a comprehensive range of integrated, community-based child, youth, adult and forensic services, including in-patient care in Alice Springs and remote care throughout Central Australia.

Working in Central Australia

The largest employer in Alice Springs is the Northern Territory Government, followed by the mining, pastoral and tourism industries.

Alice Springs is the central hub for many neighbouring remote communities and travellers. Opportunities for career advancement in the region exist in a variety of fields from education, mining, tourism and administration through to health and social work.

[Discover jobs in Central Australia](#) or get in touch with our Central Australia Health Recruitment Team at Recruit.CentralAustraliaHealth@nt.gov.au or on 08 895 15558.

Property in Alice Springs

Alice Springs has a range of homes from character homes to newly built modern houses ready to rent or buy. For information on the real estate market in this area, check your favourite online real estate website for accommodation options.

Childcare and Education

Alice Springs has a wide range of primary, secondary and tertiary education schools for you to choose from - as well as childcare facilities.

To see a list of childcare services in Alice Springs, visit mychild.gov.au.

[Discover schools in Central Australia.](#)

The Weather

A warm desert climate, Alice Springs experiences only two seasons, and is mainly dry all year round.

From May through to September sunshine and cool to cold mornings reign supreme with little rainfall and temperatures ranging from 2-20°C.

As October rolls in the temperatures begin to rise as high as 40°C by December and January. Rainfall becomes more frequent across the summer months with storm systems pushing into the Central Australia region from the monsoonal weather in the tropics, with rainfall comes lush wildflowers and blooming plants.

Making the move

Whether you're coming all the way from overseas or moving from within Australia, getting here is half of the adventure!

Making the move to the Territory comes with some additional benefits based on your position, qualifications and experience, such as potential relocation assistance and possible on-site accommodation for clinic-based roles.

Discover visa and migration options on our website.

Job vacancies

Start your career in Health by searching job vacancies on NT Health's recruitment website **healthjobs.nt.gov.au**.

Get in touch!

Want to learn more about starting a career in Health in the Northern Territory? Got questions about your new job? We are here to help!

Whether you want to know more about the Territory lifestyle or how our career opportunities can boost your professional development, we have got the answer you are looking for.

Get in touch today and start your journey.

NT HEALTH

Email

healthjobs@nt.gov.au

Phone

+61 8 8922 7020

NT PHN

Phone

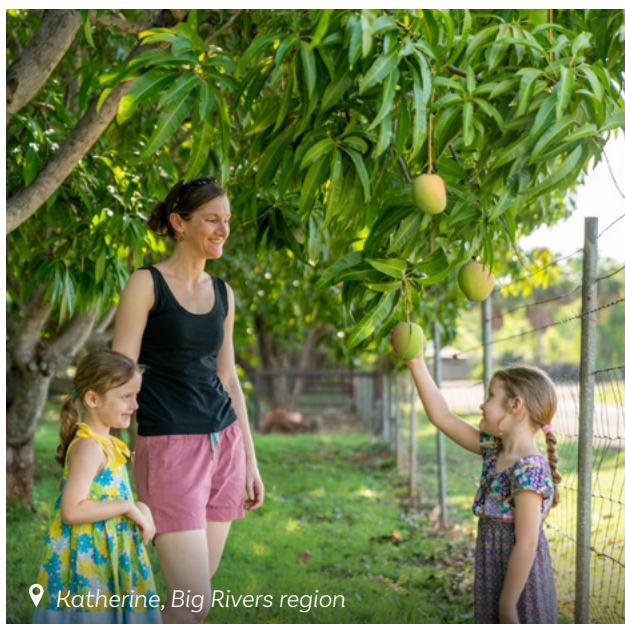
+61 8 8982 1000

Website

ntphn.org.au



Nhulunbuy, East Arnhem region



Katherine, Big Rivers region

